

STP290 - 24/Vd
STP285 - 24/Vd

SUNTECH
 Solar powering a green future™

290 Watt

POLYCRYSTALLINE SOLAR MODULE



Features



High module conversion efficiency
 Up to 14.9%, through superior cell technology and leading manufacturing capability



Positive tolerance
 Guaranteed positive tolerance 0/+5% ensures power output reliability



Extended wind and snow load tests
 Entire module certified to withstand extreme wind (3800 Pascal) and snow loads (5400 Pascal) *



Self clean effect
 Anti-reflective, hydrophobic layer improves light absorption and reduces surface dust



Excellent weak light performance
 Excellent performance under low light environments (mornings, evenings, and cloudy days)



Suntech current sorting process
 All Suntech modules sorted and packaged by amperage, maximizing system output by reducing mismatch losses by up to 2%

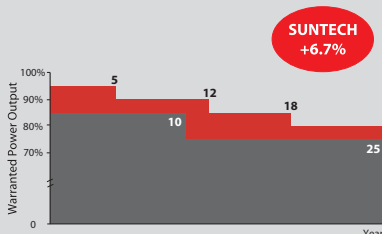
Certification and standards:
 UL1703, IEC 61215, IEC 61730, conformity to CE



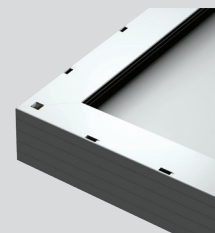
Trust Suntech to Deliver Reliable Performance Over Time

- World's No.1 manufacturer of crystalline silicon photovoltaic modules
- Unrivaled manufacturing capacity and world-class technology
- Rigorous quality control meeting the highest international standards : ISO 9001: 2008, ISO 14001: 2004 and ISO 17025: 2005

Industry-leading Warranty based on Pnom



- Based on nominal power (Pnom)
- 25-year transferrable power output warranty: 5 years/95%, 12 years/90%, 18 years/85%, 25 years/80% **
- Warrants 6.7% more power than the market standard over 25 years
- 10-year material and workmanship warranty



Superior Frame Design
 Specially designed drainage holes and rigid construction prevent frames from deforming. Screwless frame design for a long term durability.



Most Modern IP67 Rated Junction Box
 Supports any orientation installation. High performance low resistance connectors ensure maximum module power output for highest energy production.

* Please refer to Suntech Standard Module Installation Manual for details.
 ** Please refer to Suntech Product Warranty for details.

